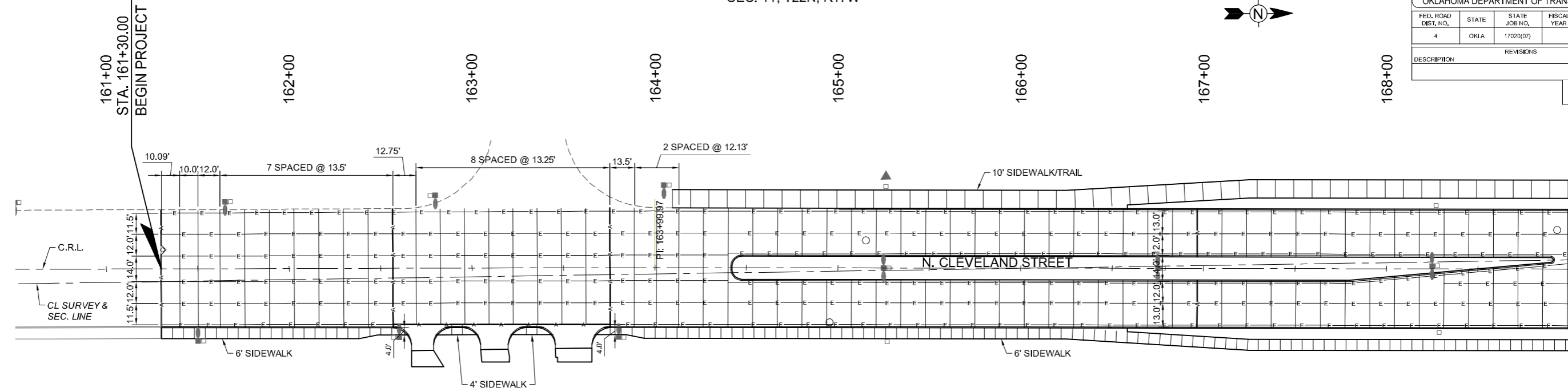


SEC. 11, T22N, R17W

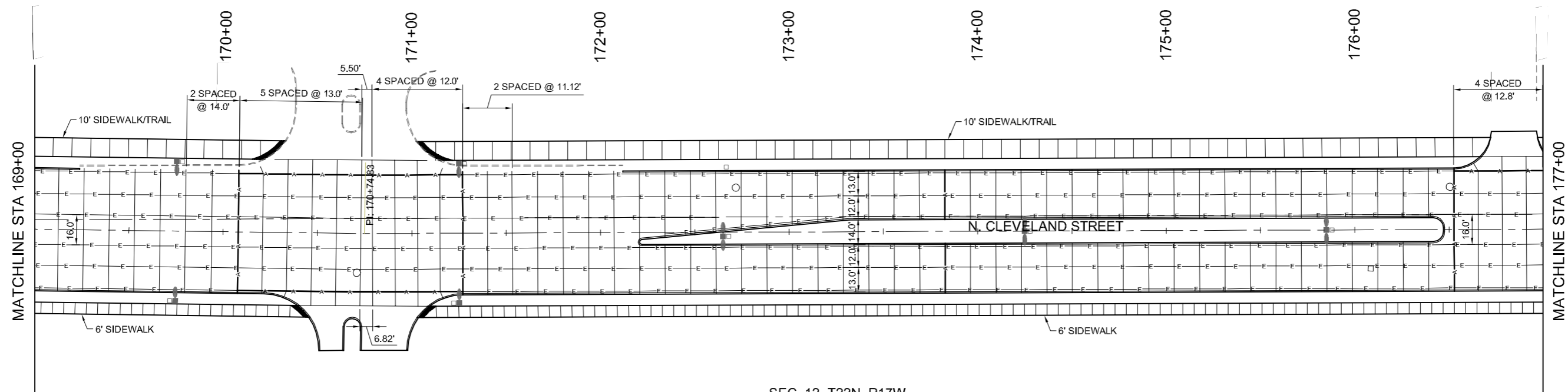
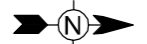


OKLAHOMA DEPARTMENT OF TRANSPORTATION					
FED. ROAD DIST. NO.	STATE	STATE JOB NO.	FISCAL YEAR	SHEET NO.	TOTAL SHEETS
4	OKLA	17020(07)		29	
DESCRIPTION			REVISIONS	DATE	

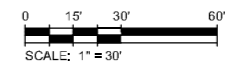


SEC. 12, T22N, R17W

SEC. 11, T22N, R17W



SEC. 12, T22N, R17W



JOINT TYPE LEGEND	
	EXPANSION JOINT
	TRANSVERSE CONTRACTION JOINT
	LONGITUDINAL JOINT

NOTES:

1. SEE TYPICAL SECTIONS FOR LONGITUDINAL JOINT LOCATIONS.
2. ISOLATION JOINTS SHALL BE PLACED AT ALL DRAINAGE INLETS.
3. SEE ENID STD. PS-2 AND ODOT STD. LECS-4, LTU-4, CRCP1-3 AND CRCP2-3 (LATEST REVISION).
4. JOINT SPACING IS AT 13.5' UNLESS OTHERWISE NOTED ON PLANS.
5. SIDEWALK SPACING IS AT 6' UNLESS NOTED OTHERWISE. SPACING AT CURB RETURNS VARIES.
6. SW / TRAIL SPACING IS AT 10' UNLESS OTHERWISE NOTED.
7. USE ODOT STD. 6" BARRIER CURB AND GUTTER SECTION(1'-8" TOTAL WIDTH)

DESIGN	MVS
DRAWN	CWT
CHECKED	JDH
APPROVED	JDH
SQUAD	Tt

N. CLEVELAND STREET

OKLAHOMA DEPARTMENT OF TRANSPORTATION

JOINT LAYOUT PLAN
STA. 161+30 TO STA. 177+00

STATE JOB NO. 17020(07) SHEET NO. 29
CITY PROJECT R-1311B GARFIELD COUNTY

4/18/2017 2:23:35 PM - P:\2771\21\131-2771\2-300\CAD\SH\FILES\CLEVELAND BLVD PLANS\JOINT LAYOUT.DWG - SCHUMACHER, MIKE